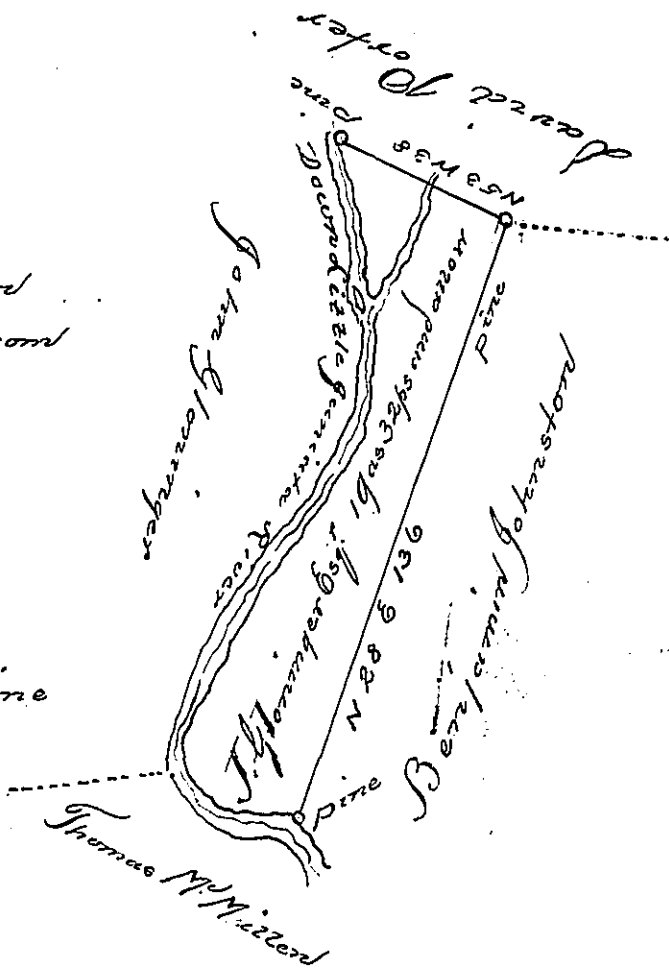


Course & distance down  
Little Juniata river from  
the pine

- S 1. W. 14
- S 18. E. 18
- S 23. W. 27
- S 40. W. 81
- S 27. E. 18
- S 60. E. 18

Total 176 to the pine



Situated in Warrior Mark Township, Huntingdon County, containing nine  
teen acres and thirty two perches and the usual allowance of six ft. Cent.  
for Roads &c. Surveyed the 12<sup>th</sup> day of November A.D. 1808, in pursuance  
of a warrant dated the 8<sup>th</sup> day of September A.D. 1808. including an  
improvement

John Carson D.S.

To Samuel Cochrane Esq.  
Surveyor Genl.

IN TESTIMONY that the above is a copy of the original remaining on file in  
the Department of Internal Affairs of Pennsylvania, made  
conformably to an Act of Assembly approved the 16th day of  
February, 1833, I have hereunto set my Hand and caused  
the Seal of said Department to be affixed at Harrisburg,  
this twenty seventh day of October 1902

Isaac P. Brown  
Secretary of Internal Affairs.